

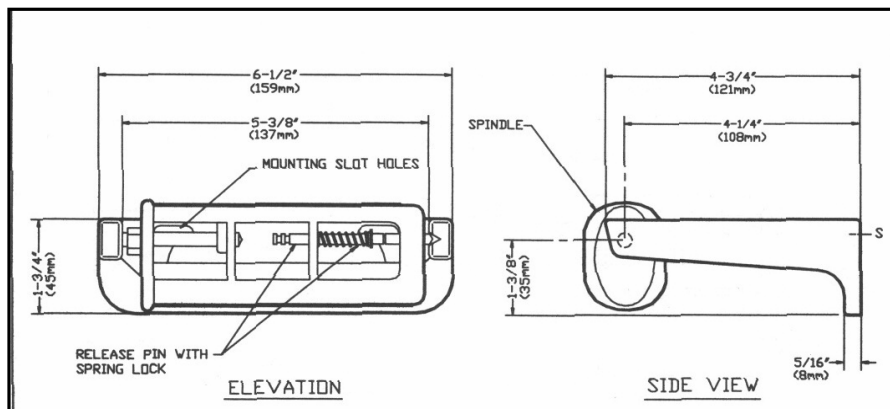


MEEK MIRRORS, LLC
 PO Box 11200
 Fort Smith, Arkansas 72917-1200
 800-643-2533 Fax 479-646-6231
www.meekmirrors.com

**Architectural
 Specification**

CAST ALUMINUM TOILET PAPER HOLDER	DATE 2/2010	MODEL M6001P M6002P	SHEET NO. 14-01
--------------------------------------	----------------	---------------------------	--------------------

MODEL M6001P AND M6002P CAST ALUMINUM PAPER HOLDER



MATERIALS: Constructed of heavy duty cast aluminum with a No.4 satin finish.

FEATURES: This holder has no waste rocking action spindles of cyclic A.B.S. thermo-plastic. The single dispensers measures 6-9/16" x 1-3/4" x 4-3/4". The double roll measures 13" x 1-3/4" x 4-3/4" and dispenses 2 rolls up to 6" diameter (2000 sheets).

INSTALLATION: Product is surface mounted onto wall using No.10 self tapping screws which are included.

GUARANTEE: Meek Mirrors gives a one year guarantee on all of their products against defects in workmanship and material.

SPECIFICATION: Product shall be Model M6001P or M6002P as distributed by Meek Mirrors - Fort Smith, Arkansas. Above data is applicable to productions as of the date of this technical data sheet. The manufacturer reserves the right to make changes in design without formal notice.