



MEEK MIRRORS, LLC

PO Box 11200

Fort Smith, Arkansas 72917-1200

800-643-2533 Fax 479-646-6231

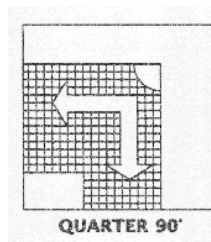
www.meekmirrors.com

**Installation
Instructions**

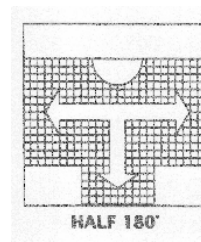
PANARAMIC® DOME MIRROR	DATE 2/2010	MODEL M1800 Series	SHEET NO. 6-00
------------------------	----------------	--------------------------	-------------------

Installation Instructions

90° and 180° Panaramic® Dome Mirror



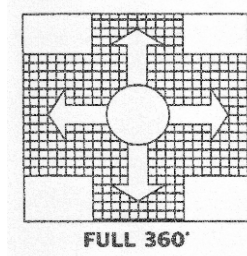
QUARTER 90°



HALF 180°

- 1) Place Panaramic® mirror on wall/ceiling where desired.
- 2) Lightly mark outside dimension of Panaramic® mirror.
- 3) Place hook or hooks inside marks on wall as described in step #2.
Place hooks on wall as high as possible.
- 4) Attach springs to hooks on wall.

360° Panaramic® Dome Mirror



FULL 360°

- 1) Note: If wires seem to be loose at centered washer, additional tension may be created by squeezing inverted “U” area of wire (in center of each wire with pliers).
- 2) Mirror can now be hung with any cord, wire or chain.
- 3) Attach cord to center washer.
- 4) To level mirror, attach second cord to lowest end of mirror at inverted “U” area of wire and tie other end of leveling cord to midpoint of center cord.