

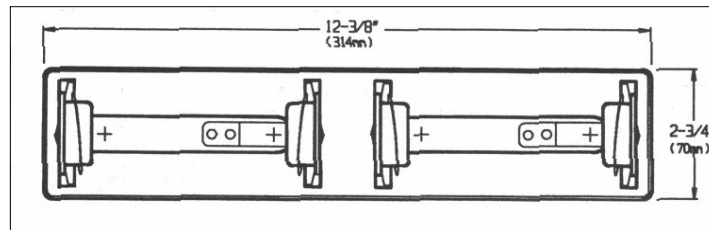
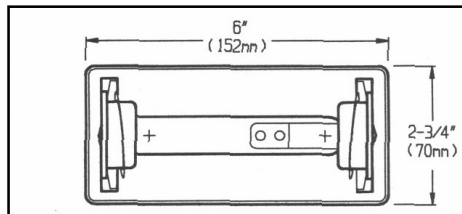


**MEEK MIRRORS, LLC**  
 PO Box 11200  
 Fort Smith, Arkansas 72917-1200  
 800-643-2533 Fax 479-646-6231  
[www.meekmirrors.com](http://www.meekmirrors.com)

**Architectural  
 Specification**

TOILET PAPER DISPENSERS	DATE 2/2010	MODEL M6001 Single M6002 Double	SHEET NO. 15-01
----------------------------	----------------	---------------------------------------	--------------------

## MODEL M6001 AND M6002 TOILET PAPER DISPENSER



**MATERIALS:** Constructed of chrome plated steel with a high polish finish.

**FEATURES:** This product has a theft resistant locking device. The single holder dispenses one standard or one 1800 sheet toilet paper roll. The double holder dispenses two standard or two 1800 sheet toilet paper rolls. Overall size of single dispenser is 6" x 2-3/4" x 4-1/4", overall size of the double dispenser is 12-3/8" x 2 3/4" x 4-1/4".

**INSTALLATION:** Product is surface mounted onto wall using No.10 self tapping screws which are included.

**GUARANTEE:** Meek Mirrors gives a one year guarantee on all of their products against defects in workmanship and material.

**SPECIFICATION:** Product shall be Model M6001 or M6002 as distributed by Meek Mirrors Fort Smith, Arkansas. Above data is applicable to productions as of the date of this technical data sheet. The manufacturer reserves the right to make changes in design without formal notice.